

BesterMig 200-S

Spare Parts	1
Figure A: Machine Assembly	2
Electrical Schematic	3
CODE: 76543	3



Spare Parts

REV01
05/2023

ASSEMBLY PAGE NAME			Machine Assembly					
CODE NO.:	K NO.:	FIGURE NO.:	A					
76543	B18264-1	BesterMig 200-S	1					

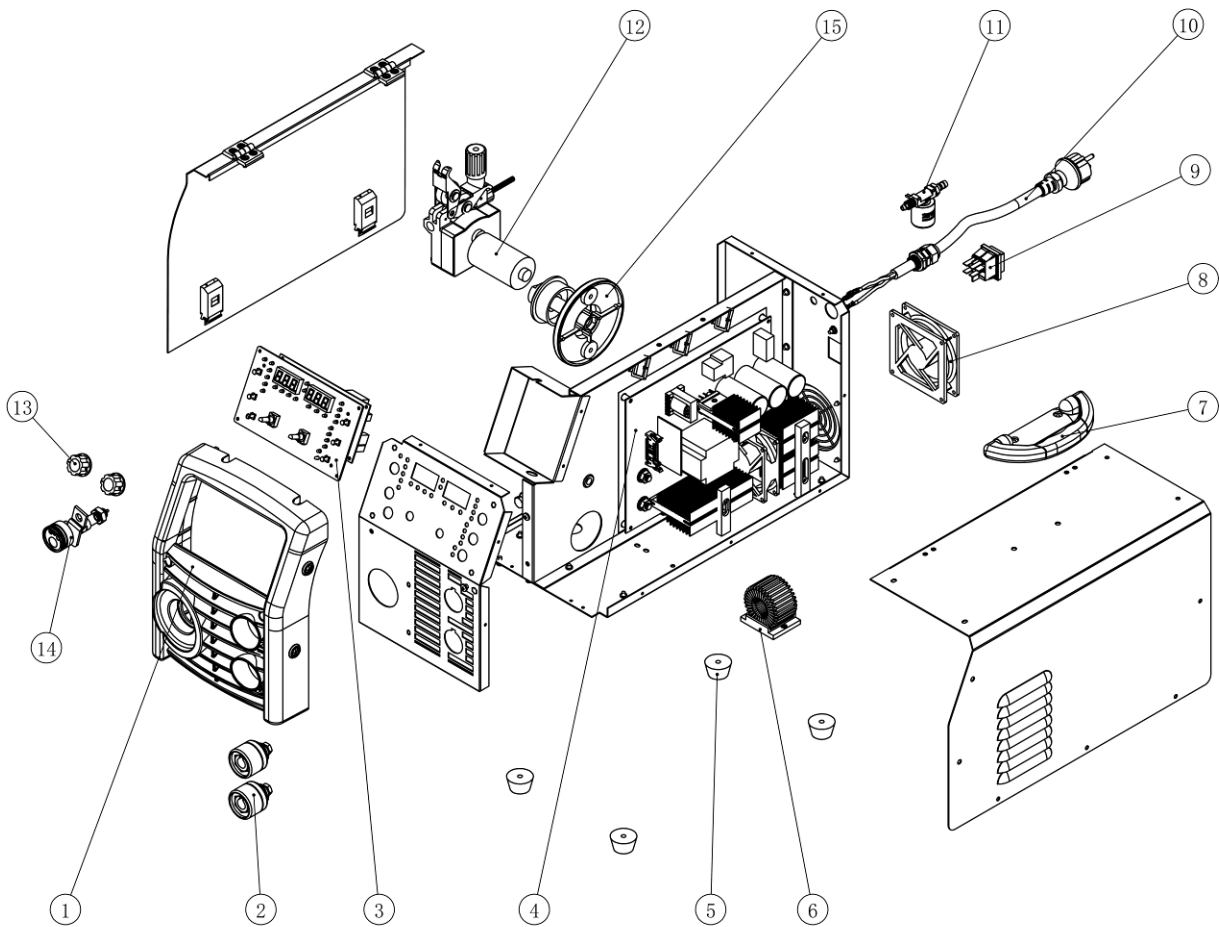


Figure A

Figure A: Machine Assembly

Item	Description	Part Number	QTY	1	2	3	4	5	6	7
1	Front plastic panel	S33444-1	1	X						
2	Quick connector	S33444-2	2	X						
3	Encode PCB	S35725-3	1	X						
4	Power system	S35725-4	1	X						
5	Rubber blanket	S33444-5	4	X						
6	Output choke	S35725-6	1	X						
7	Handle	S33444-7	1	X						
8	DC Fan	S35725-8	1	X						
9	Power Switch	S33444-9	1	X						
10	Power cable	S33444-10	1	X						
11	Solenoid valve	S35725-11	1	X						
12	Wire Feeder	S35725-12	1	X						
13	Knob	S33444-13	2	X						
14	Torch Connection	S33444-14	1	X						
15	Spool Spindle Assembly	S33444-17	1	X						
-	0.6/0.8 solid wire drive roll	S33444-20	1							
-	0.8/1.0 solid wire drive roll	S33444-21	1							
-	1.0/1.2 Al wire drive roll	S33444-22	1							
-	0.9/1.2 core wire drive roll	S33444-23	1							

Electrical Schematic

CODE: 76543

