



PipeCut 280 Pro Series *Next generation Exact*

WEIGHT



15.5
kg

RANGE OF USE



50MM – 280MM

MAX PIPE WALL

STEEL
20MM

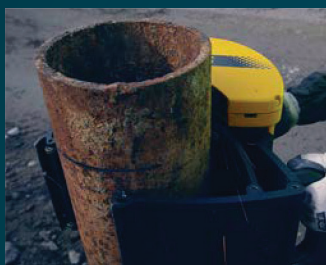
PLASTIC
45MM

SUITABLE FOR

ALL
MATERIALS

VOLTAGE

110–120V/50–60 Hz
220–240V/50–60 Hz



PipeCut 280 Pro Series

I Voltage/Power/Current	230 V 2500 W
II Voltage/Power/Current	110 –120 V 2200 W
No-Load speed	1 = 1900 r/min 2 = 2900 r/min
Blade diameter	165 mm
Mounting bore	62 mm
Speed preselection	

Next generation Exact PipeCut 280 Pro Series

A significantly improved pipe saw with advanced features, the new Pro Series 280 is equipped with a powerful 2500W motor in the 230V version and completely renewed electronic overload protection. User friendliness, efficiency, and precision have been improved with a traffic light system enabling the user to cut pipes at the correct travel speed, as well as a laser indicator and an updated adjustment mechanism. The machine's advanced features, including significantly extended lifetimes for stainless steel and acid-proof stainless steel saw blades, let you cut steel pipes with wall thicknesses up to 20 mm. Pipe cutting is now easier than ever.

PRICE INCLUDES:

PipeCut 280 Pro Series pipe saw, TCT 165 blade, shoulder bag, pipe support x 4, instructions, allen keys 5 mm & 2 mm.



BLADES & DISCS FOR PipeCut 280 Pro Series – see more on page 23

www.exacttools.com

exact
Pipe Cutting System

BLADES & DISCS 140

	BLADE/DISCS DIMENSIONS (MM)						SUITABLE WITH
	Ø	BORE	KERF	BODY	TEETH	PIPE MATERIAL	
TCT 140	140	62	1.8	1.4	46	Steel, Copper, Plastics	PC 170, 170E, 220E, 280 PS, 360 PS, 460 PS
TCT Z140	140	62	1.8	1.4	38	Steel, Copper, Plastics	PC 170, 170E, 220E, 280 PS, 360 PS, 460 PSPC460PS
CERMET 140	140	62	1.8	1.4	46	Steel, Stainless Steel, Copper, Plastics	PC 170, 170E, 220E, 280 PS, 360 PS, 460 PS
CERMET 140 THIN	140	62	1.4	1.2	46	Steel, Stainless Steel, Copper, Plastics	For special application
DIAMOND X140	140	62	2.7	1.5	-	Cast Iron, Ductile (nodular cast iron)	PC 170, 170E, 220E, 280 PS, 360 PS, 460 PS
ALU 140	140	62	2.5	1.8	36	Aluminium	PC 170, 170E, 220E, 280 PS, 360 PS, 460 PS
INOX 140 <i>NEW</i>	140	62	1.65	1.3	46	Stainless Steel, Acid Proof	PC 220 INOX & 360 INOX

BLADES & DISCS 165

PLEASE NOTE: PS (Pro Series) models can be mounted with a 140 mm saw blade, but will have limited maximum cutting depth.

	BLADE/DISCS DIMENSIONS (MM)						SUITABLE WITH
	Ø	BORE	KERF	BODY	TEETH	PIPE MATERIAL	
TCT 165	165	62	1.8	1.4	52	Steel, Copper, Plastics	PC 280 PS, 360 PS, 460 PS
CERMET 165	165	62	1.8	1.4	52	Steel, Stainless Steel, Copper, Plastics	PC 280 PS, 360 PS, 460 PS
DIAMOND X165	165	62	2.7	1.5	-	Cast Iron, Ductile (Nodular Cast Iron)	PC 280 PS, 360 PS, 460 PS
ALU 165	165	62	2.5	1.8	42	Aluminium	PC 280 PS, 360 PS, 460 PS
DIAMOND Cut+Bevel	165	62	3.1	2	0	Cast Iron, Ductile (Nodular Cast Iron)	C+B 360 PS, C+B AIR 360

BLADES 180

	BLADE/DISCS DIMENSIONS (MM)						SUITABLE WITH
	Ø	BORE	KERF	BODY	TEETH	PIPE MATERIAL	
ALU 180	180	62	2.7	1.8	46	Aluminium, Plastics	PC AIR 360, 360 PS, 460 PS
CERMET 180	180	62	2.7	1.8	46	Steel, Stainless Steel	PC AIR 360, 360 PS, 460 PS
DIAMOND X180	180	62	2.7	1.5	-	Cast Iron	PC AIR 360, 360 PS, 460 PS

SPECIAL BLADES & TIPS

	BLADE/DISCS DIMENSIONS (MM)						SUITABLE WITH
	Ø	BORE	KERF	BODY	TEETH	PIPE MATERIAL	
CERMET V155	155	65	1.6	1.4	58	Thin wall ventilation pipes	PC V1000
TCT P150	150	62	1.8	1.4	40	Plastics (PE, PP, PVC and similar)	PC P400
CUT+BEVEL	148	62	2/30		40/8	Plastics (PE, PP, PVC and similar)	PC P400
CUT+BEVEL DIAM.	140	62	3.3	2	-	Cast Iron, Plastics	C+B 170E
PIPEBEVEL TIPS STAINLESS						Steel, Aluminium, Stainless Steel	PipeBevel 220E, PipeBevel 360E

PC = PipeCut

C+B = Cut+Bevel

PS = Pro Series

BLADES & DISCS 165 are suitable for our former models: Exact PipeCut 280E, 360E, 410E