

G30 & G30 Air

A flip front welding and grinding helmet



The G30 is a unique design in flip front welding and grinding helmets. The visor provides effective protection from UV and IR radiation when the visor is both open and closed, and is available in different shade levels. The helmet is equipped with a strong and comfortable head gear.

- Changeable inner and outer lens
- Lightweight shell
- Large inner grinding visor
- Comfort headgear
- Respiratory option with ESAB PAPR

Visit esab.com for more information.

Process

- SMAW/MMA (Stick)
- GMAW (MIG/MAG)
- GTAW (TIG)
- Grinding
- Oxy Fuel Cutting
- Plasma Cutting
- PAW - Plasma Arc Welding



G30 Air with ESAB PAPR

Specifications

Viewing Area	155 mm x 170 mm (large visor)
Large Inner Lens DIN Options	Clear, DIN 2, DIN 3, DIN 5
Outer Flip Visor DIN Options	DIN 5, DIN 8, DIN 10
Standards	CE, ANSI, CSA, ASNZS, EN12941 Class TH3 P R SL
Weight – G30	570 g
Weight – G30 Air	730 g

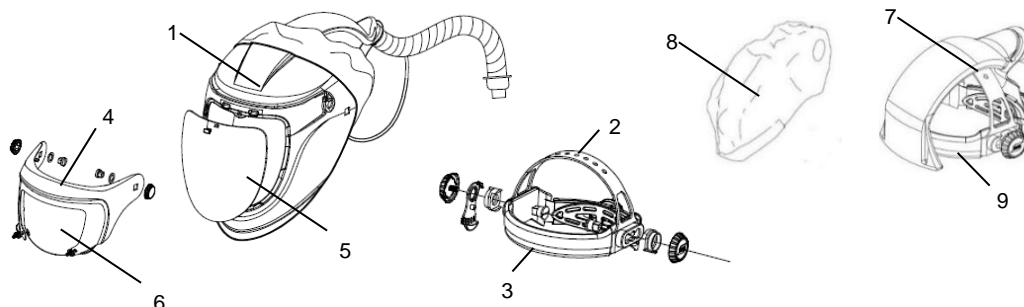
Ordering Information

G30 DIN 10	0700000430
G30 DIN 11	0700000431
G30 Air DIN 10 Prepared for fresh air (incl. air duct and face seal)	0700000433
G30 Air DIN 11 Prepared for fresh air (incl. air duct and face seal)	0700000434
EPR-X1.1 PAPR system with expandable hose	0700500920

Wear and Spare Parts

1. Main Shell G30, G40 & G50	0700000515
2. Head Gear	0700000415
3. Sweat Band	0700000414
4. Flip up Frame G30 Including Screws	0700000508
5. Large inner Visor G30, G40 & G50 - Clear	0700000501
5. Large inner Visor G30 DIN 2	0700000502
5. Large inner Visor G30 DIN 3	0700000503
5. Large inner Visor G30 DIN 5	0700000504
6. Outer Flip Visor G30 DIN 5	0700000505
6. Outer Flip Visor G30 DIN 8	0700000506
6. Outer Flip Visor G30 DIN 10	0700000507
7. Headgear including air duct	0700000420
8. Head & Face Seal G30, G40 & G50	0700000512
Kit Bag (empty)	0700002315

For additional information on PAPR units please see separate fact sheet.



ESAB / esab.com

